



# SAFETY BILL SAYS...

Back to School Safety

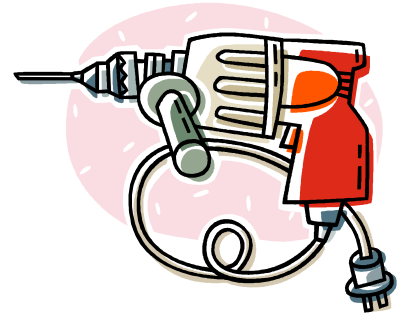


Southern California Schools  
Risk Management

## GOING BACK TO SCHOOL

### Don't Just Plug It In – Know Your Power Tools

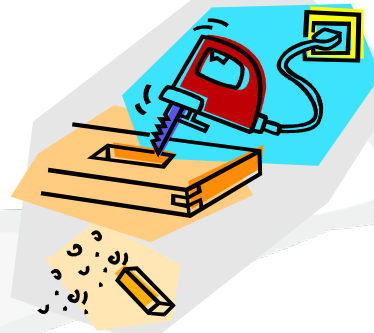
... you know the tendency. You get the new power tool or equipment in your work area inside a brand new box. You open the lid and unpack the box. In some cases assembly may be required and then you will want to get started with your new product.



**STOP!** Resist the urge to plug it in and fire it up. You may be overlooking one of the most important steps in using new tools and equipment. Find that Owner's or Operation Manual and make sure to read it. The *manufacturer's recommendations* are most often the best source of safety tips and warnings you will ever see for your new product. Make a copy of the document or scan it into your computer for future use. Take the 'Warning' statements seriously.

This same principle should apply to any tool or equipment that you are using for the first time or if you haven't used it recently. Look carefully through the manual and make sure that your equipment meets the manufacturer's recommendations. If you can't find a copy of it, contact the manufacturer directly or go onto the internet and try to find a copy.

Don't fall into such a routine that you forget to follow safe operating practices.



**Safety Bill Says...** © 2013 - Reprinting Permitted

Please note, this publication is meant to provide some helpful advice, but is not legal direction and fact specific matters should be referred to your attorney for discussion.



**SAFETY BILL**

# **SAFETY CHATS**



**SCSRM**

Southern California Schools  
Risk Management

**Sign-In Sheet for Safety Chats**

**Date:**

---

**TOPIC: GOING BACK TO SCHOOL**

**Don't Just Plug It In – Know Your Power Tools**

Name (Please Print)

Name (Please Print)

---



---



---



---



---



---



---



---



---



---



---



---



---



---



---



---



---



---



---



---



---



---



---



---



---



---



---



---



---



---



---



---



---



---



---



---



---



---



---



---



---



---



---



---

